

INdependent, TRustworthy and Excellent business consultancy

Solvency II XBRL reporting in just 3 steps - with SAP Disclosure Management 10.1

Solvency II

Solvency II is a comprehensive program of regulatory requirements for insurers, covering authorisation, corporate governance, supervisory reporting, public disclosure and risk assessment & management, as well as solvency and reserving.



SAP Disclosure Management 10.1

Solvency II reporting can be easily done with SAP Disclosure Management 10.1 in combination with the Solvency II Business Content as part of the SAP Disclosure Management, XBRL reporting add-ons 1.0.

Step 1:

Install SAP Disclosure Management 10.1 with Solvency II Business Content

The Solvency II Business Content for SAP Disclosure Management 10.1 includes the EIOPA annotated templates based on Taxonomy 2.2.0.

The screenshot shows the SAP Disclosure Management web interface on the left and a linked MS Office Excel spreadsheet on the right. The web interface displays the configuration for the 'Quarterly Solvency II reporting Group (org)'. The 'Workflow' section indicates a due date of 9-11-2017 and a current step of 'In progress'. The Excel spreadsheet shows the 'S.02.01.02.01 Balance sheet' template with columns for 'Assets' and 'Solvency II value'. The 'Assets' section includes items like Goodwill, Deferred acquisition costs, Intangible assets, Deferred tax assets, Pension benefit surplus, Property, plant & equipment held for own use, Investments (other than assets held for index-linked and unit-linked contracts), Property (other than for own use), Holdings in related undertakings, including participations, Equities, Equities - listed, Equities - unlisted, Bonds, Government Bonds, Corporate Bonds, and Structured notes. The 'Solvency II value' column shows values for each asset category, such as 4,431,055.00 for Deferred tax assets and 1,663,135,183.00 for Corporate Bonds.

Web interface with MS Office Excel

Step 2:

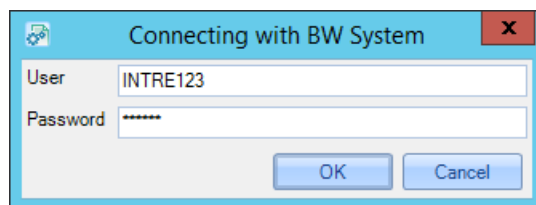
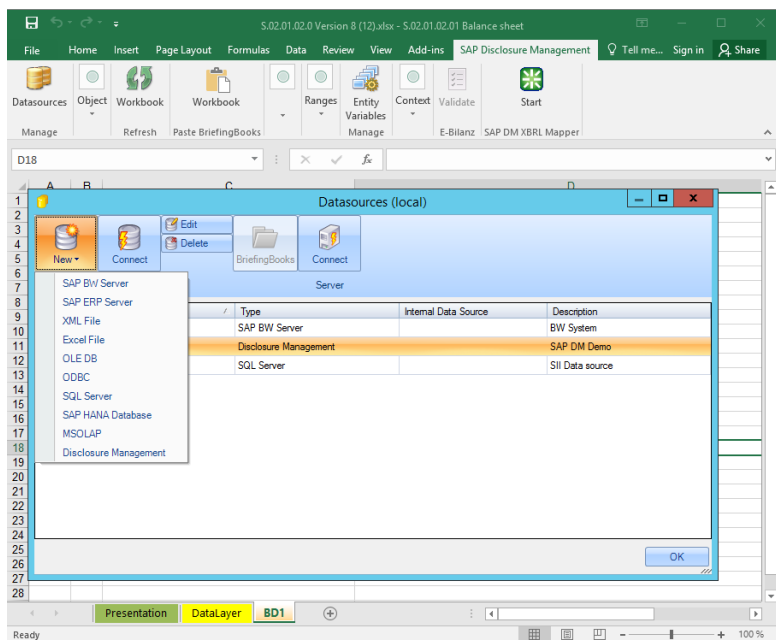
Link the annotated templates to your source system or fill them manually

Link the templates to your source system(s) using a variety of connectors available in SAP Disclosure Management 10.1.

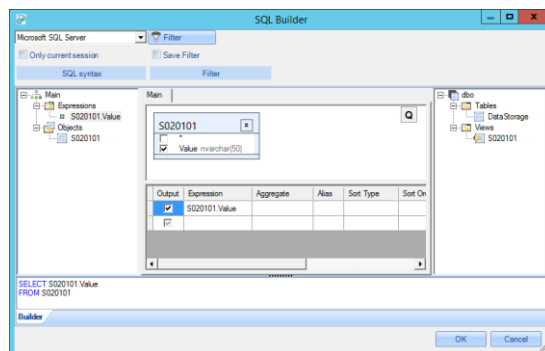
INdependent, TRustworthy and Excellent business consultancy

SAP Disclosure Management 10.1 is able to connect with:

- SAP BW Server;
- SAP ERP Server;
- XML files;
- Local Excel files (for instance already filled annotated templates);
- SQL Server;



Connections to SQL, BW and ERP server

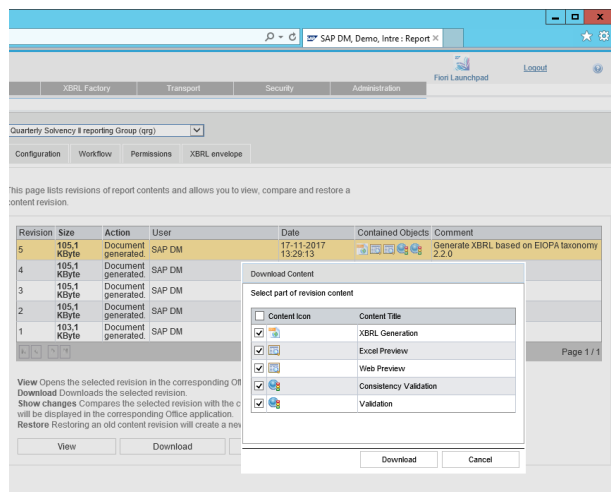
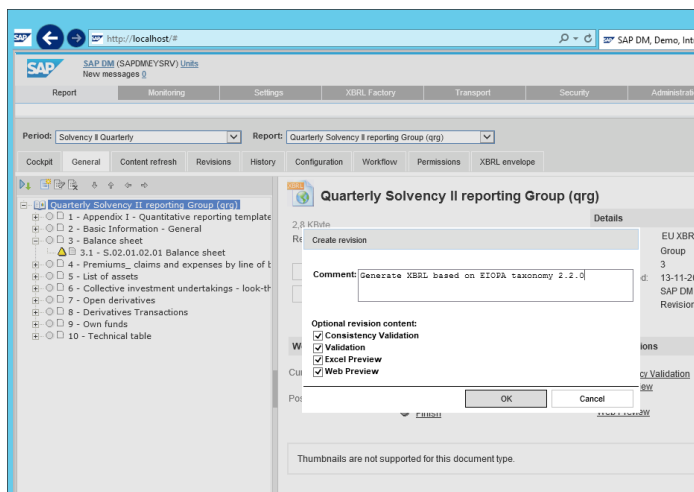


SQL Builder for queries to SQL, BW and ERP

Step 3:

Generate XBRL in just a mouse click

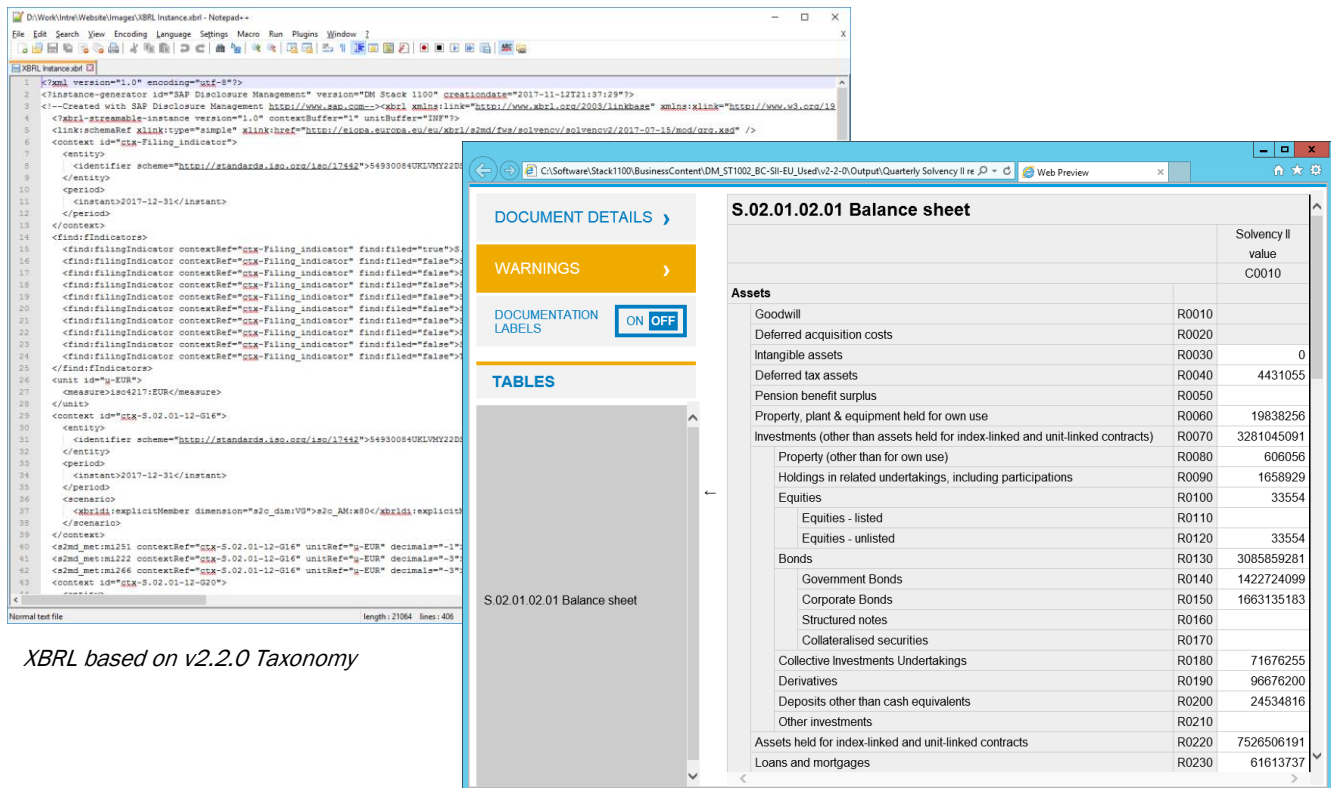
Click "Create" to generate an XBRL file, Consistency Validation, a Validation report, an Excel preview or a Web preview based on Taxonomy v2.2.0.



INdependent, TRustworthy and Excellent business consultancy

Solvency II Business Content

With the Solvency II Business Content published as part of the SAP Disclosure Management, XBRL reporting add-ons 1.0 you are ready to publish your Solvency II information, including validity checks and previews to ensure the consistency and accuracy of data reported on the basis of the EU XBRL taxonomies.



XBRL based on v2.2.0 Taxonomy

	Solvency II value	C0010
Assets		
Goodwill	R0010	
Deferred acquisition costs	R0020	
Intangible assets	R0030	0
Deferred tax assets	R0040	4431055
Pension benefit surplus	R0050	
Property, plant & equipment held for own use	R0060	19838256
Investments (other than assets held for index-linked and unit-linked contracts)	R0070	3281045091
Property (other than for own use)	R0080	606056
Holdings in related undertakings, including participations	R0090	1658929
Equities	R0100	33554
Equities - listed	R0110	
Equities - unlisted	R0120	33554
Bonds	R0130	3085859281
Government Bonds	R0140	1422724099
Corporate Bonds	R0150	1663135183
Structured notes	R0160	
Collateralised securities	R0170	
Collective Investments Undertakings	R0180	71676255
Derivatives	R0190	96676200
Deposits other than cash equivalents	R0200	24534816
Other investments	R0210	
Assets held for index-linked and unit-linked contracts	R0220	7526506191
Loans and mortgages	R0230	61613737

Web preview to ensure the consistency and accuracy of data reported on the basis of the generated XBRL

How we can help

Intre is a professional management consultancy organisation with more than 18 years proven experience in SAP EPM implementation projects at corporate centre finance departments. We are SAP EPM trained and certified management consultants and can help you with the implementation of the Solvency II Business Content for SAP Disclosure Management 10.1

For more information, please contact us at info@intre.nl or call us on +31 6 201 39 285.

Intre